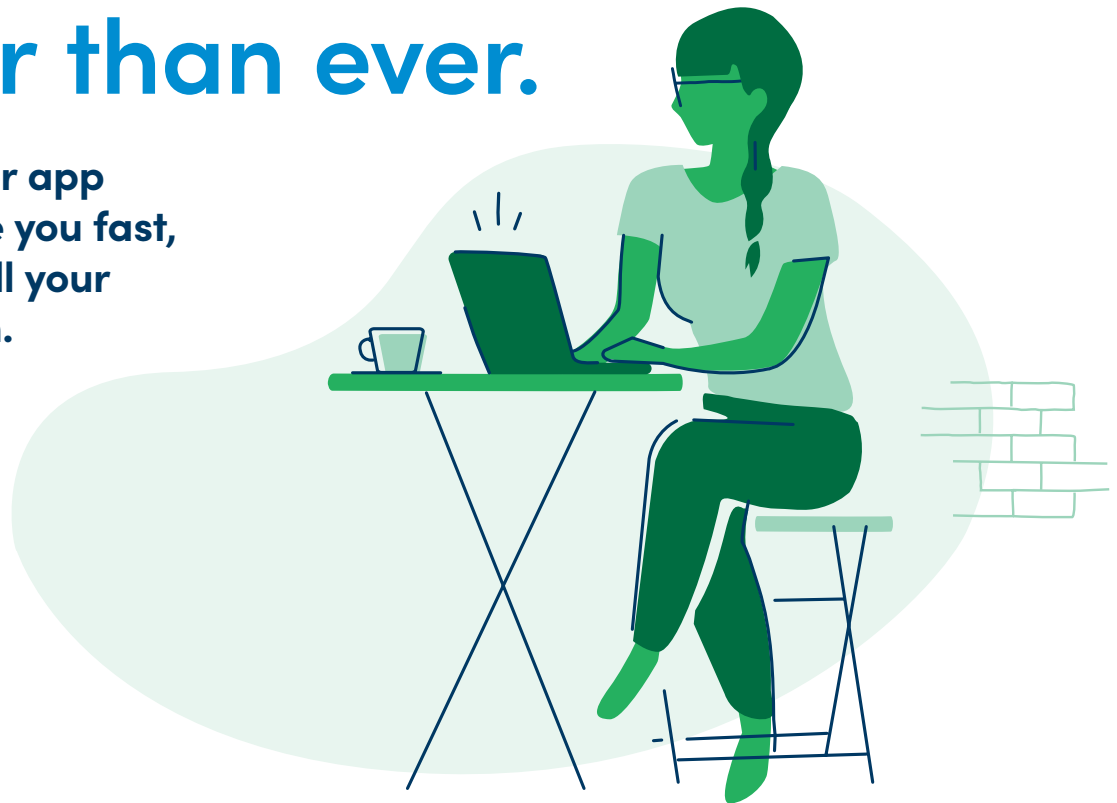


# Our digital tools make managing your plan simpler than ever.

Both our member app and website give you fast, easy access to all your plan information.



## Use both to:

- Find in-network care or compare costs of procedures.
- See recent claims activity.
- View covered family members' plan information.
- Ask Mark, our virtual chatbot, questions about your plan.
- Find answers to benefit questions.

Plus, our app lets you view your virtual member ID cards, so you always have them handy. Sign-in is quick and secure with fingerprint or face recognition.

## See for yourself.

Visit [highmark.com/blueshieldnyny](https://highmark.com/blueshieldnyny) or download the Highmark Plan app from the app store or Google Play. Use your login credentials from

the member website to sign in or, if you're a new member, click **Login** and then **Register** to set up your account.



Because Life.™