



**ENVIRONMENTAL DESIGN
PARTNERSHIP, LLP.**

Shaping the physical environment



2022 Capital Project

Public Information Presentation

Consultants:

Edwin C. Anker
Phinney Design Group

Joseph C. Dannible
Environmental Design Partnership, LLP

PHINNEY
DESIGN GROUP



Google Earth
HS/MS CAMPUS



October 21, 2021



October 21, 2021



1 CIRCULATION IMPROVEMENTS

- NEW ROUNDABOUT: IMPLEMENT ONE-WAY CIRCULATION PATTERN TO IMPROVE ON-CAMPUS TRAFFIC FLOW AND SAFETY
 - SEPARATE PARENT-STUDENT DROP-OFF AND BUS LOOP TRAFFIC, IMPLEMENT IN CONJUNCTION WITH NEW DROP-OFF LOOP
 - REDUCE PAVEMENT AREA; INCREASE GREEN SPACE
 - LIMIT PASSENGER VEHICLE THROUGH-TRAFFIC ON TRANSPORTATION SERVICE BUILDING SITE
 - REDUCE POTENTIAL FOR TRAFFIC BACK-UP DURING SCHOOL START AND RELEASE PERIODS

2 PARENT-STUDENT DROP-OFF

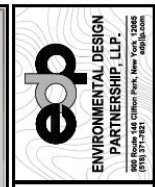
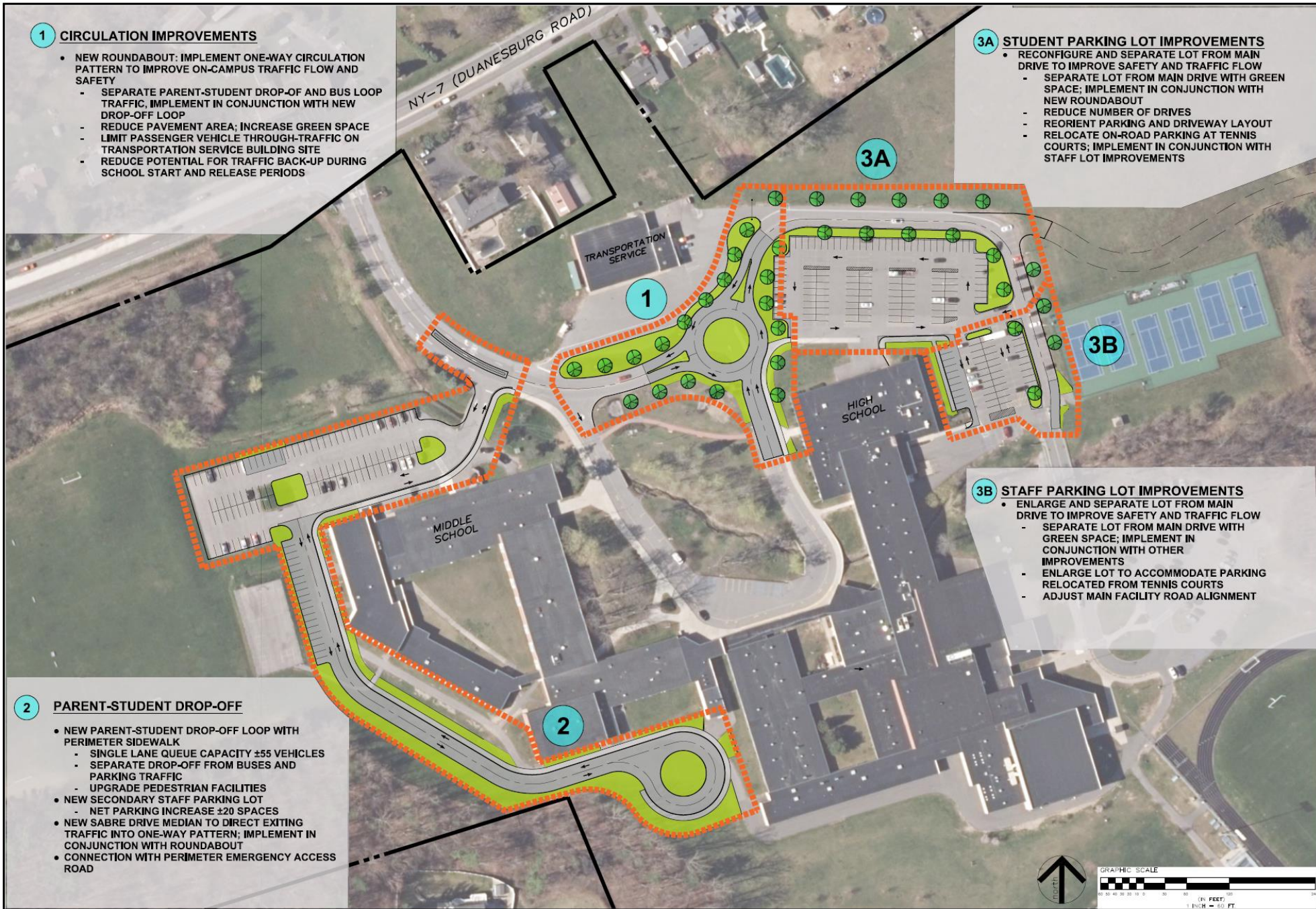
- NEW PARENT-STUDENT DROP-OFF LOOP WITH PERIMETER SIDEWALK
 - SINGLE LANE QUEUE CAPACITY ±55 VEHICLES
 - SEPARATE DROP-OFF FROM BUSES AND PARKING TRAFFIC
 - UPGRADE PEDESTRIAN FACILITIES
- NEW SECONDARY STAFF PARKING LOT
 - NET PARKING INCREASE ±20 SPACES
- NEW SABRE DRIVE MEDIAN TO DIRECT EXITING TRAFFIC INTO ONE-WAY PATTERN; IMPLEMENT IN CONJUNCTION WITH ROUNDABOUT
- CONNECTION WITH PERIMETER EMERGENCY ACCESS ROAD

3A STUDENT PARKING LOT IMPROVEMENTS

- RECONFIGURE AND SEPARATE LOT FROM MAIN DRIVE TO IMPROVE SAFETY AND TRAFFIC FLOW
 - SEPARATE LOT FROM MAIN DRIVE WITH GREEN SPACE; IMPLEMENT IN CONJUNCTION WITH NEW ROUNDABOUT
 - REDUCE NUMBER OF DRIVES
 - REORIENT PARKING AND DRIVEWAY LAYOUT
 - RELOCATE ON-ROAD PARKING AT TENNIS COURTS; IMPLEMENT IN CONJUNCTION WITH STAFF LOT IMPROVEMENTS

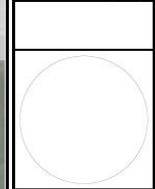
3B STAFF PARKING LOT IMPROVEMENTS

- ENLARGE AND SEPARATE LOT FROM MAIN DRIVE TO IMPROVE SAFETY AND TRAFFIC FLOW
 - SEPARATE LOT FROM MAIN DRIVE WITH GREEN SPACE; IMPLEMENT IN CONJUNCTION WITH OTHER IMPROVEMENTS
 - ENLARGE LOT TO ACCOMMODATE PARKING RELOCATED FROM TENNIS COURTS
 - ADJUST MAIN FACILITY ROAD ALIGNMENT



PROPOSED SITE IMPROVEMENTS
MIDDLE & HIGH SCHOOL
 SCHALMONT CENTRAL SCHOOL DISTRICT
 1-2 SABRE DRIVE
 SCHENECTADY, NEW YORK
 TOWN OF ROTTERDAM, COUNTY OF SCHENECTADY

DATE	DATE	DATE	DATE



SCALE: 1"=60'

SHEET TITLE

CONCEPT PLAN

SHEET

C-102

JANUARY 5, 2022



HS/MS CAMPUS

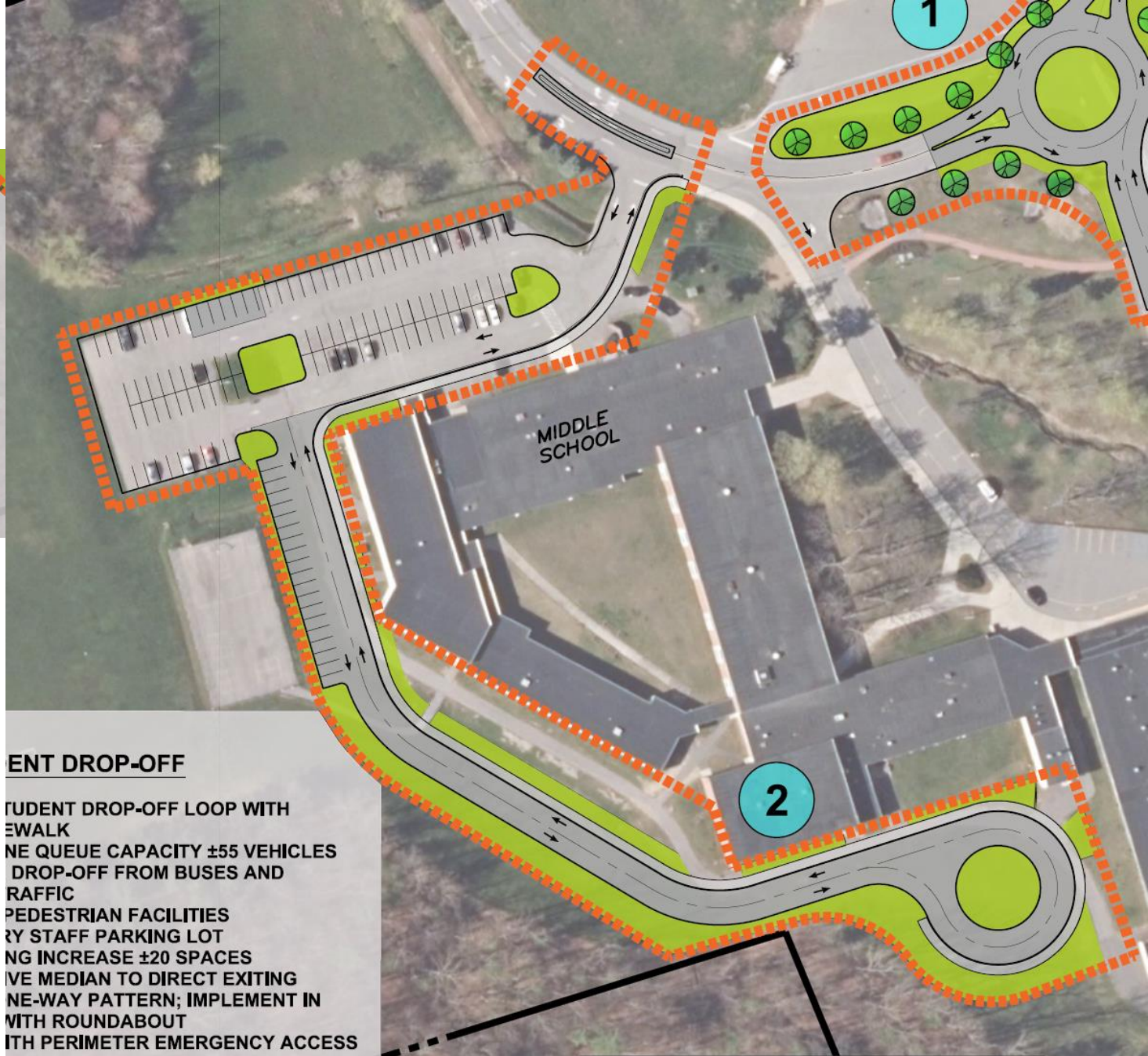
1 CIRCULATION IMPROVEMENTS

- **NEW ROUNDABOUT: IMPLEMENT ONE-WAY CIRCULATION PATTERN TO IMPROVE ON-CAMPUS TRAFFIC FLOW AND SAFETY**
 - SEPARATE PARENT-STUDENT DROP-OFF AND BUS LOOP TRAFFIC, IMPLEMENT IN CONJUNCTION WITH NEW DROP-OFF LOOP
 - REDUCE PAVEMENT AREA; INCREASE GREEN SPACE
 - LIMIT PASSENGER VEHICLE THROUGH-TRAFFIC ON TRANSPORTATION SERVICE BUILDING SITE
 - REDUCE POTENTIAL FOR TRAFFIC BACK-UP DURING SCHOOL START AND RELEASE PERIODS



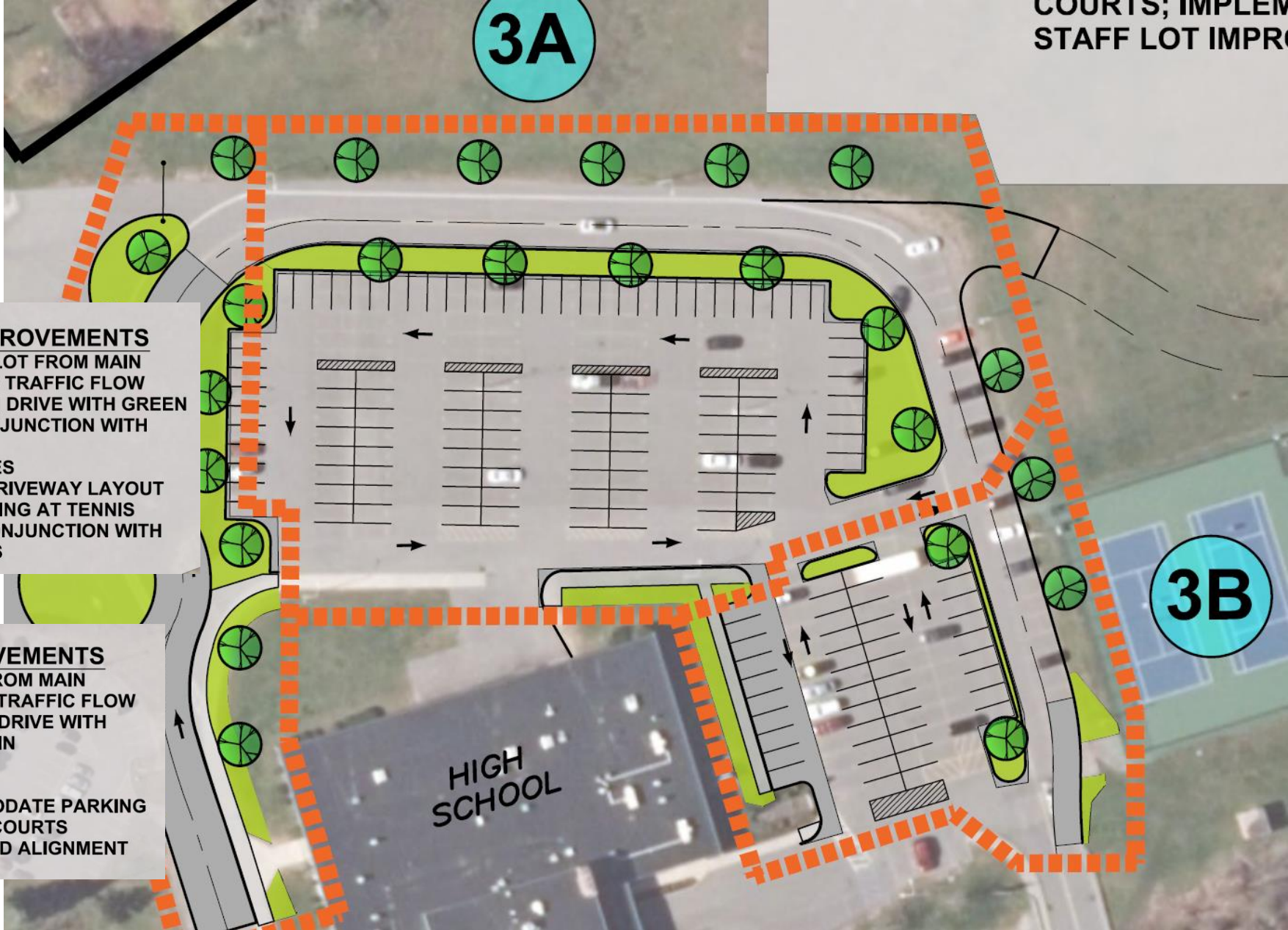
2 PARENT-STUDENT DROP-OFF

- NEW PARENT-STUDENT DROP-OFF LOOP WITH PERIMETER SIDEWALK
 - SINGLE LANE QUEUE CAPACITY ±55 VEHICLES
 - SEPARATE DROP-OFF FROM BUSES AND PARKING TRAFFIC
 - UPGRADE PEDESTRIAN FACILITIES
- NEW SECONDARY STAFF PARKING LOT
 - NET PARKING INCREASE ±20 SPACES
- NEW SABRE DRIVE MEDIAN TO DIRECT EXITING TRAFFIC INTO ONE-WAY PATTERN; IMPLEMENT IN CONJUNCTION WITH ROUNDABOUT
- CONNECTION WITH PERIMETER EMERGENCY ACCESS ROAD



PARENT DROP-OFF

PARENT-STUDENT DROP-OFF LOOP WITH PERIMETER SIDEWALK
 SINGLE LANE QUEUE CAPACITY ±55 VEHICLES
 SEPARATE DROP-OFF FROM BUSES AND PARKING TRAFFIC
 UPGRADE PEDESTRIAN FACILITIES
 NEW SECONDARY STAFF PARKING LOT
 NET PARKING INCREASE ±20 SPACES
 NEW SABRE DRIVE MEDIAN TO DIRECT EXITING TRAFFIC INTO ONE-WAY PATTERN; IMPLEMENT IN CONJUNCTION WITH ROUNDABOUT
 CONNECTION WITH PERIMETER EMERGENCY ACCESS ROAD



3A STUDENT PARKING LOT IMPROVEMENTS

- RECONFIGURE AND SEPARATE LOT FROM MAIN DRIVE TO IMPROVE SAFETY AND TRAFFIC FLOW
 - SEPARATE LOT FROM MAIN DRIVE WITH GREEN SPACE; IMPLEMENT IN CONJUNCTION WITH NEW ROUNDABOUT
 - REDUCE NUMBER OF DRIVES
 - REORIENT PARKING AND DRIVEWAY LAYOUT
 - RELOCATE ON-ROAD PARKING AT TENNIS COURTS; IMPLEMENT IN CONJUNCTION WITH STAFF LOT IMPROVEMENTS

3B STAFF PARKING LOT IMPROVEMENTS

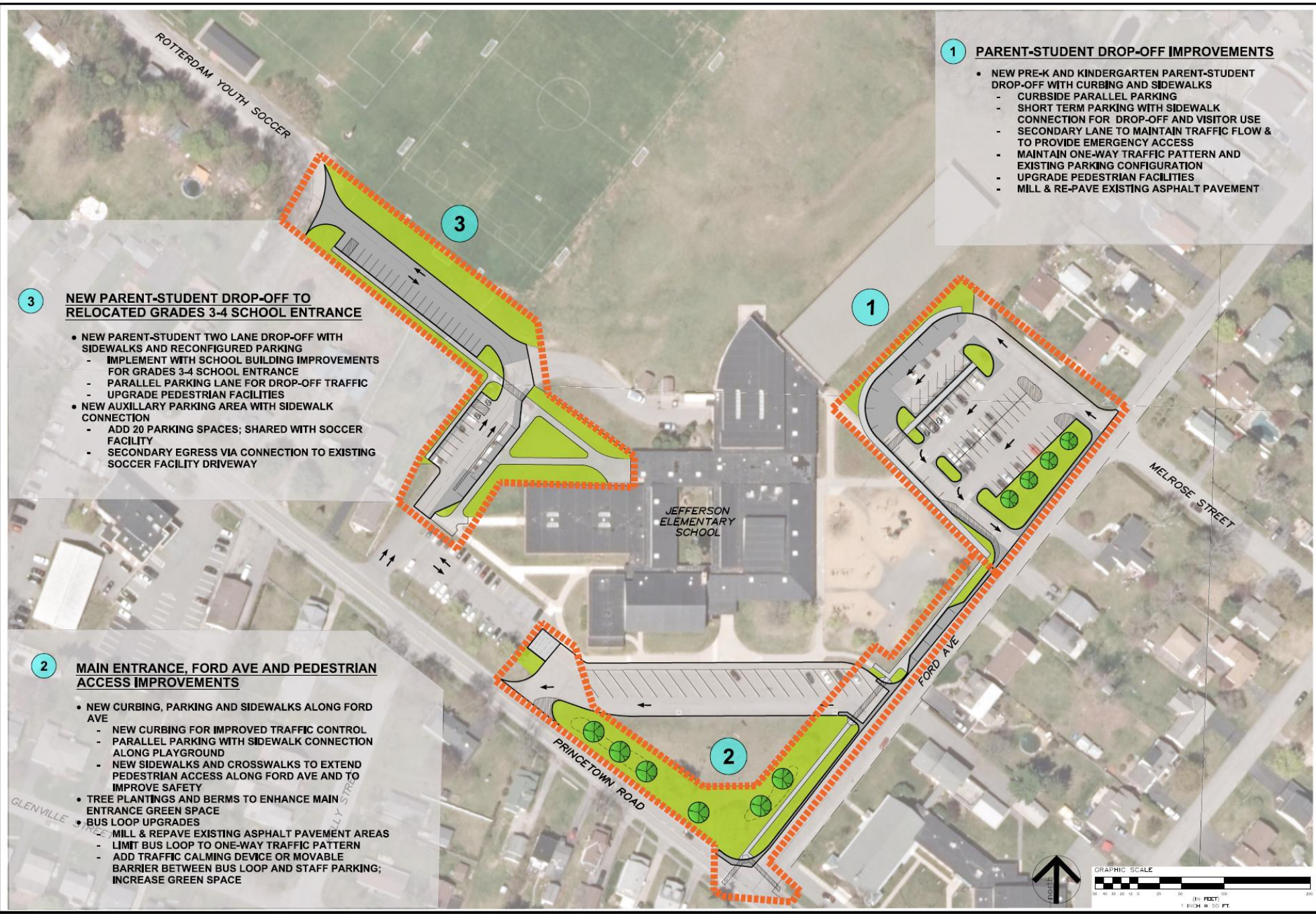
- ENLARGE AND SEPARATE LOT FROM MAIN DRIVE TO IMPROVE SAFETY AND TRAFFIC FLOW
 - SEPARATE LOT FROM MAIN DRIVE WITH GREEN SPACE; IMPLEMENT IN CONJUNCTION WITH OTHER IMPROVEMENTS
 - ENLARGE LOT TO ACCOMMODATE PARKING RELOCATED FROM TENNIS COURTS
 - ADJUST MAIN FACILITY ROAD ALIGNMENT



Google Earth
JEFFERSON CAMPUS



October 21, 2021

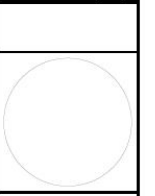


- 1 PARENT-STUDENT DROP-OFF IMPROVEMENTS**
- NEW PRE-K AND KINDERGARTEN PARENT-STUDENT DROP-OFF WITH CURBING AND SIDEWALKS
 - CURBSIDE PARALLEL PARKING
 - SHORT TERM PARKING WITH SIDEWALK CONNECTION FOR DROP-OFF AND VISITOR USE TO PROVIDE EMERGENCY ACCESS
 - SECONDARY LANE TO MAINTAIN TRAFFIC FLOW & TO PROVIDE EMERGENCY ACCESS
 - MAINTAIN ONE-WAY TRAFFIC PATTERN AND EXISTING PARKING CONFIGURATION
 - UPGRADE PEDESTRIAN FACILITIES
 - MILL & RE-PAVE EXISTING ASPHALT PAVEMENT

- 3 NEW PARENT-STUDENT DROP-OFF TO RELOCATED GRADES 3-4 SCHOOL ENTRANCE**
- NEW PARENT-STUDENT TWO LANE DROP-OFF WITH SIDEWALKS AND RECONFIGURED PARKING
 - IMPLEMENT WITH SCHOOL BUILDING IMPROVEMENTS FOR GRADES 3-4 SCHOOL ENTRANCE
 - PARALLEL PARKING LANE FOR DROP-OFF TRAFFIC
 - UPGRADE PEDESTRIAN FACILITIES
 - NEW AUXILIARY PARKING AREA WITH SIDEWALK CONNECTION
 - ADD 20 PARKING SPACES; SHARED WITH SOCCER FACILITY
 - SECONDARY EGRESS VIA CONNECTION TO EXISTING SOCCER FACILITY DRIVEWAY

- 2 MAIN ENTRANCE, FORD AVE AND PEDESTRIAN ACCESS IMPROVEMENTS**
- NEW CURBING, PARKING AND SIDEWALKS ALONG FORD AVE
 - NEW CURBING FOR IMPROVED TRAFFIC CONTROL
 - PARALLEL PARKING WITH SIDEWALK CONNECTION ALONG PLAYGROUND
 - NEW SIDEWALKS AND CROSSWALKS TO EXTEND PEDESTRIAN ACCESS ALONG FORD AVE AND TO IMPROVE SAFETY
 - TREE PLANTINGS AND BERMS TO ENHANCE MAIN ENTRANCE GREEN SPACE
 - BUS LOOP UPGRADES
 - MILL & REPAVE EXISTING ASPHALT PAVEMENT AREAS
 - LIMIT BUS LOOP TO ONE-WAY TRAFFIC PATTERN
 - ADD TRAFFIC CALMING DEVICE OR MOVABLE BARRIER BETWEEN BUS LOOP AND STAFF PARKING; INCREASE GREEN SPACE

DESIGNED BY	DATE
DRAWN BY	DATE
CHECKED BY	DATE
PROJECT NUMBER	DATE
REVISION	DATE



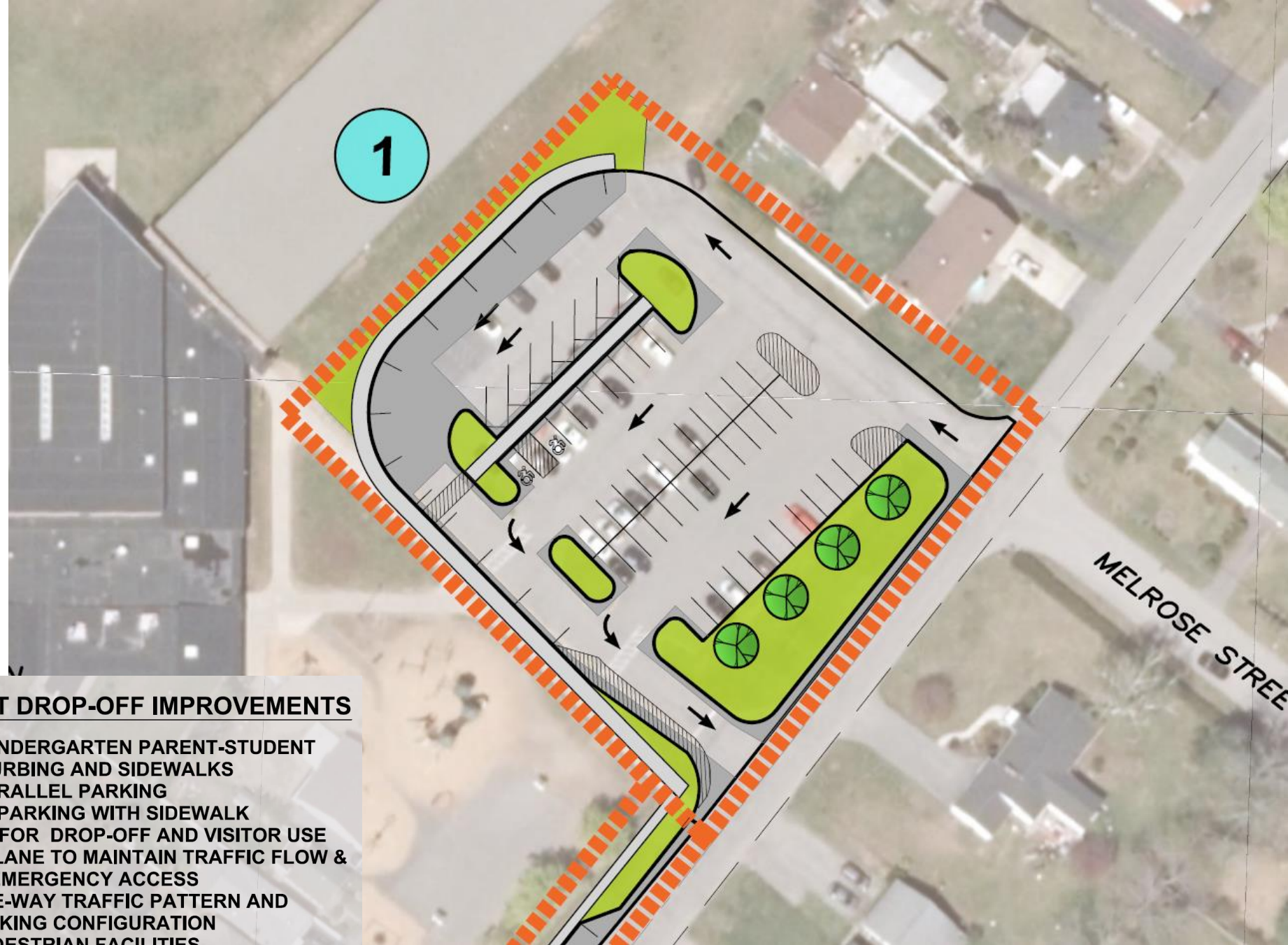
SCALE: 1"=50'

NOT FOR CONSTRUCTION

SHEET TITLE: CONCEPT PLAN

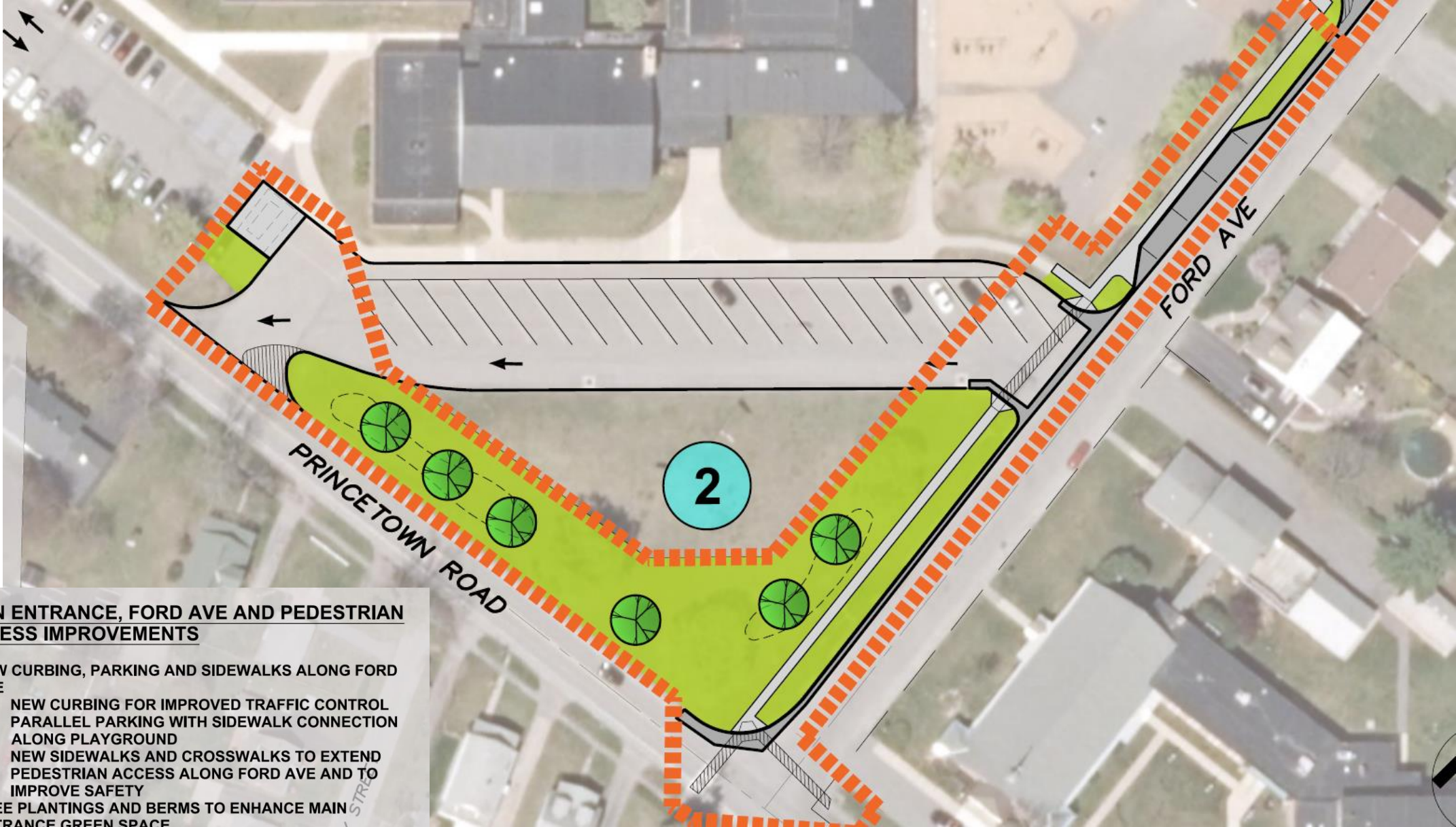
SHEET: C-100





1 PARENT-STUDENT DROP-OFF IMPROVEMENTS

- **NEW PRE-K AND KINDERGARTEN PARENT-STUDENT DROP-OFF WITH CURBING AND SIDEWALKS**
 - CURBSIDE PARALLEL PARKING
 - SHORT TERM PARKING WITH SIDEWALK CONNECTION FOR DROP-OFF AND VISITOR USE
 - SECONDARY LANE TO MAINTAIN TRAFFIC FLOW & TO PROVIDE EMERGENCY ACCESS
 - MAINTAIN ONE-WAY TRAFFIC PATTERN AND EXISTING PARKING CONFIGURATION
 - UPGRADE PEDESTRIAN FACILITIES
 - MILL & RE-PAVE EXISTING ASPHALT PAVEMENT



2

MAIN ENTRANCE, FORD AVE AND PEDESTRIAN ACCESS IMPROVEMENTS

- NEW CURBING, PARKING AND SIDEWALKS ALONG FORD AVE
 - NEW CURBING FOR IMPROVED TRAFFIC CONTROL
 - PARALLEL PARKING WITH SIDEWALK CONNECTION ALONG PLAYGROUND
 - NEW SIDEWALKS AND CROSSWALKS TO EXTEND PEDESTRIAN ACCESS ALONG FORD AVE AND TO IMPROVE SAFETY
- TREE PLANTINGS AND BERMS TO ENHANCE MAIN ENTRANCE GREEN SPACE
- BUS LOOP UPGRADES
 - MILL & REPAVE EXISTING ASPHALT PAVEMENT AREAS
 - LIMIT BUS LOOP TO ONE-WAY TRAFFIC PATTERN
 - ADD TRAFFIC CALMING DEVICE OR MOVABLE BARRIER BETWEEN BUS LOOP AND STAFF PARKING; INCREASE GREEN SPACE

3

NEW PARENT-STUDENT DROP-OFF TO RELOCATED GRADES 3-4 SCHOOL ENTRANCE

- **NEW PARENT-STUDENT TWO LANE DROP-OFF WITH SIDEWALKS AND RECONFIGURED PARKING**
 - **IMPLEMENT WITH SCHOOL BUILDING IMPROVEMENTS FOR GRADES 3-4 SCHOOL ENTRANCE**
 - **PARALLEL PARKING LANE FOR DROP-OFF TRAFFIC**
 - **UPGRADE PEDESTRIAN FACILITIES**
- **NEW AUXILLARY PARKING AREA WITH SIDEWALK CONNECTION**
 - **ADD 20 PARKING SPACES; SHARED WITH SOCCER FACILITY**
 - **SECONDARY EGRESS VIA CONNECTION TO EXISTING SOCCER FACILITY DRIVEWAY**

3

JEFFERSON
ELEMENTARY
SCHOOL

VENTILATION UPGRADES

- Jefferson Elementary
 - Air conditioning all instructional classroom spaces
 - Air conditioning Cafeteria
 - Air conditioning Play Space
- Middle School
 - Air conditioning all instructional classroom spaces
(Cafeteria air conditioning is complete)
- High School
 - Air conditioning all instructional classroom spaces
 - Air conditioning Cafeteria

PROJECT FINANCIALS

- Funding sources
 - Capital Project Reserve - \$5 million
 - ESSER (Elementary and Secondary School Emergency Relief) - \$1.1 million
- Total Project Cost
 - \$6.1 million
- No Tax Impact
 - 0% tax impact

SCHALMONT BUDGET VOTE

VOTE! May 17th

Schalmont High School Gym Lobby